

# Custom Forms

**Design** a form with the map, layout, and data that you need. Surety and Surety Pro users can have the professionals at AgriData design a company specific form OR Surety **Pro** users can design the form themselves with the Form Designer.



**Optimize** your mapping by ridding your forms of unnecessary information and adding the requirements that meet your needs.



**Visualize** your form data in Surety<sup>®</sup> Pro by coloring, labeling, and filtering information from your forms and display them on the map to aid in your decision making.

Please visit our website for package and pricing options.

Sign up on our website for a **FREE** trial account.

Contact Us



Phone: 701-746-8580

Fax: 701-746-8681

Email: [info@agridatainc.com](mailto:info@agridatainc.com)

[www.agridatainc.com](http://www.agridatainc.com)

PO Box 8372  
4200 James Ray Dr.  
Suite 300  
Grand Forks, ND 58202-8372



## Aerial & Ground Applicators

*Apply correctly the first time, every time with Surety<sup>®</sup> / Surety<sup>®</sup> Pro, the premier online mapping software.*

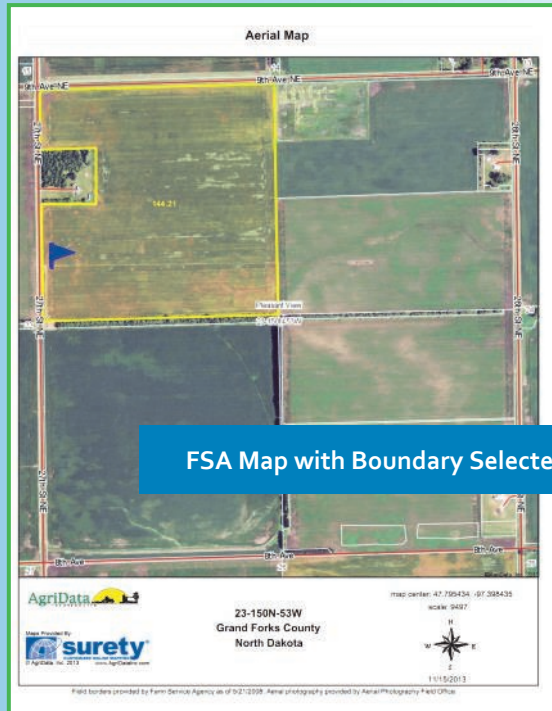
Surety<sup>®</sup> is a product of AgriData, Inc.  
[www.AgriDataInc.com](http://www.AgriDataInc.com)  
701-746-8580



## WHAT IS SURETY<sup>®</sup>?

Surety<sup>®</sup> Customized Online Mapping is an easy-to-use mapping service that allows you to easily locate target fields, verify acreage, and print/email detailed maps.

- Quick & Easy to Use
- Continental US Coverage
- FSA (CLU) Field Borders (5/21/2008)
- Robust Drawing Tools
- Import and view As-Applied log files including SatLoc<sup>®</sup> and TracMap<sup>®</sup>.
- Latest FSA Aerial Imagery (NAIP)
- Advanced search tools to easily locate fields
- Add Labels and Symbols to the map.



**Chemical Application Form**

Company: AgriData Inc  
Address: 4200 James Ray Dr  
Address: Grand Forks, ND 58202  
Phone: (218) 791-5708

Date Ordered: 9/10/2013  
Invoice Number:  
Owner/Operator: John Doe  
Address: 1073 Park St  
Address: Arvella, KS  
Phone:  
Field ID: SW 19  
Crop: Wheat  
Mapped Acres: 84.82  
Actual Acres: 84.82  
Yield Goal:  
Previous Crop: Corn  
Growth Stage:  
Crop Condition:

Field Notes:

Map Center: 37° 34' 57.69, 98° 1' 3.41  
Kingman, KS

Pest	Product (Supplier)	EPA Reg. #	A.I.	Rate	Unit	Carrier	Total	Unit
REI: 0 Protective Clothing Required								

Applicator: \_\_\_\_\_ Date of Application: \_\_\_\_\_ Start Time: \_\_\_\_\_ End Time: \_\_\_\_\_  
Applicator's ID: \_\_\_\_\_ Acres Applied: \_\_\_\_\_ Temperature: \_\_\_\_\_  
Field Conditions:  Other  Wind Speed: \_\_\_\_\_ Wind Direction: \_\_\_\_\_

**Application Forms**

Included in the Surety<sup>®</sup> subscription are a multitude of application forms that are able to be filled out, printed, emailed, or saved to your computer.

- Chemical, Aerial, Seed, Fertilizer, Invoice, and Manure Application Forms
- Request your own Custom Made Forms.
- Include your own logo.
- Accessible anywhere with an internet connection.

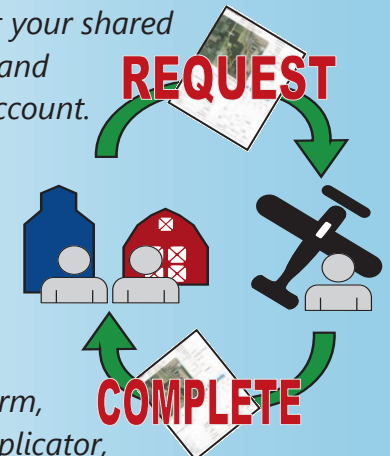


Surety<sup>®</sup> Pro takes all of the features of Surety<sup>®</sup> and adds to it by allowing more customization and data tracking abilities.

- ✓ Modify existing Forms or create your own using the **Forms Designer**
- ✓ Save selected or drawn borders
- ✓ Save application forms to clients.
- ✓ Color code and label fields by product, crop, status, etc.
- ✓ Share your form and take orders from any Surety<sup>®</sup> or Surety<sup>®</sup> Pro user.
- ✓ Sensitive Crops \*Where Available
- ✓ Import and Save all your SatLoc<sup>®</sup> and TracMap<sup>®</sup> as-applied logs.
- ✓ Import field boundaries.

## Order Taking

Customer fills out your shared application form and saves it to your account. (No Emailing)



You accept the form, assign it to an applicator, and complete the job all the while your customer monitors the progress.